

STANDARD ARRIVAL
CHART - INSTRUMENT
(STAR) - ICAO

TRANSITION ALTITUDE
10000 FT

KARAGANDA TOWER 122.0
KARAGANDA ATIS (EN) 135.8
KARAGANDA ATIS (RU) 127.8

ARLIH 2H, BANOS 6H, BEDKA 6H,
DETOV 6H, DOZIN 2H, GOLTU 2H,
LESNA 6H, NEMKU 2H, SEHAL 2H,
SULIB 3H, UNLOM 2H.

KARAGANDA
RWY 23

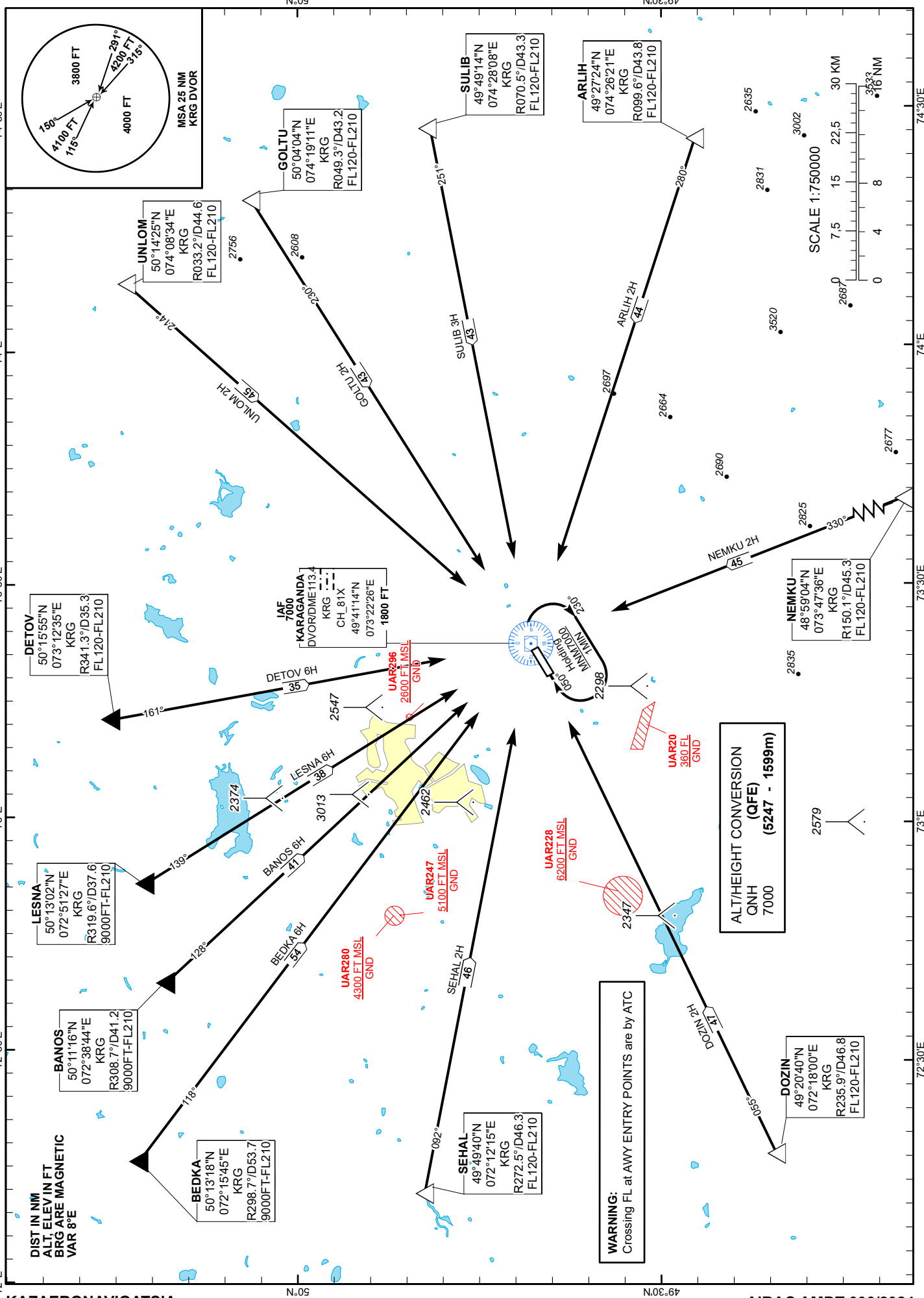
CHANGE: GEDNO 6H excluded.

DIST IN NM
ALT, ELEV IN FT
BRG ARE MAGNETIC
VAR 8°E

WARNING:
Crossing FL at AWY ENTRY POINTS are by ATC

ALT/HEIGHT CONVERSION
(QFE)
QNH
7000
(5247 - 1599m)

SCALE 1:750000
0 7.5 15 22.5 30 KM
0 4 8 16 NM



STANDARD ARRIVAL ROUTES – INSTRUMENT (STAR) KARAGANDA RWY 23
UNLOM 2H After crossing UNLOM (R033.2° D44.6 NM KRG), proceed on track 214° to DVOR/DME KRG. Cross UNLOM at FL120-FL210. Cross DVOR/DME KRG at 7000FT.
GOLTU 2H After crossing GOLTU (R049.3° D43.2 NM KRG), proceed on track 230° to DVOR/DME KRG. Cross GOLTU at FL120-FL210. Cross DVOR/DME KRG at 7000FT.
SULIB 3H After crossing SULIB (R070.5° D43.3 NM KRG), proceed on track 251° to DVOR/DME KRG. Cross SULIB at FL120-FL210. Cross DVOR/DME KRG at 7000FT.
ARLIH 2H After crossing ARLIH (R099.6° D43.8 NM KRG), proceed on track 280° to DVOR/DME KRG. Cross ARLIH at FL120-FL210. Cross DVOR/DME KRG at 7000FT.
NEMKU 2H After crossing NEMKU (R150.1° D45.3 NM KRG), proceed on track 330° to DVOR/DME KRG. Cross NEMKU at FL120-FL210. Cross DVOR/DME KRG at 7000FT.
DOZIN 2H After crossing DOZIN (R235.9° D46.8 NM KRG), proceed on track 055° to DVOR/DME KRG. Cross DOZIN at FL120-FL210. Cross DVOR/DME KRG at 7000FT.
SEHAL 2H After crossing SEHAL (R272.5° D46.3 NM KRG), proceed on track 092° to DVOR/DME KRG. Cross SEHAL at FL120-FL210. Cross DVOR/DME KRG at 7000FT.
BEDKA 6H After crossing BEDKA (R298.7° D53.7 NM KRG), proceed on track 118° to DVOR/DME KRG. Cross BEDKA at 9000FT-FL210. Cross DVOR/DME KRG at 7000FT.
BANOS 6H After crossing BANOS (R308.7° D41.2 NM KRG), proceed on track 128° to DVOR/DME KRG. Cross BANOS at 9000FT-FL210. Cross DVOR/DME KRG at 7000FT.
LESNA 6H After crossing LESNA (R319.6° D37.6 NM KRG), proceed on track 139° to DVOR/DME KRG. Cross LESNA at 9000FT-FL210. Cross DVOR/DME KRG at 7000FT.
DETOV 6H After crossing DETOV (R341.3° D35.3 NM KRG), proceed on track 161° to DVOR/DME KRG. Cross DETOV at FL120-FL210. Cross DVOR/DME KRG at 7000FT.